

A Climate for Change in Healthcare

Climate change is a global public health crisis. It has the potential to significantly impact human health, therefore, every effort should be undertaken to identify, assess, manage and mitigate these risks. The healthcare system is a significant contributor to emissions and therefore has an opportunity to move towards sustainability practices.

First Nations Peoples of Queensland are already disproportionately experiencing the impacts of climate change. First Nations People's leadership, knowledge and enduring connection to Country are essential in ensuring community driven, place-based responses inform and shape climate action.

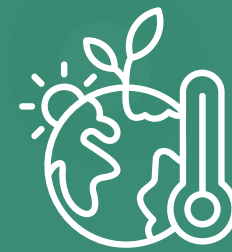
Recommendations for Queensland Health

Leadership

- 1 Queensland Health should enhance its leadership role in both state and national approaches to climate outcomes for the healthcare sector and beyond.

Measurement

- 3 The environmental impact including the carbon footprint, from Queensland Health operations, should be robustly measured, using a measurement framework that incorporates emissions from clinical care.
- 4 The environmental benefits of healthcare delivery that promote planetary health, should be incorporated into the measurement framework, including improved outcomes from waste reduction, better asset management, digitising care, high benefit care and a healthier population.



Sustainability

- 6 Queensland Health should commit to developing sustainable buildings (and a roadmap to uplifting current buildings) to an international sustainability standard.
- 7 Health Service Planning should prioritise the health of populations along with mitigation and adaptation responses to the projected impacts from climate change, integrated across the broader healthcare system.
- 8 Disaster management should prioritise climate related impacts with a specific focus on planning, preparedness, response, resilience and care continuity.

Coordinated response

- 2 Queensland Health should strengthen its coordinated approach to governance and outcomes in relation to planetary health and climate change response:
 - a. Queensland Health should develop a whole of system sustainability framework that includes the Department of Health and Hospital and Health Services and incorporates reporting and accountability requirements.
 - b. Queensland Health's planetary health and climate change response governance should include consumers, clinicians, First Nations representatives, Hospital and Health Service leaders, and consider both clinical and non-clinical mitigation and adaptation approaches.
 - c. Planetary health and climate change response principles and indicators should be incorporated into Service Level Agreements with Hospital and Health Services.

Cooperative

- 5 Climate change interventions across Queensland Health should be cooperative:
 - a. Queensland Clinical Networks should establish a mechanism to provide leadership, advice and advocacy for planetary health and climate change response strategies.
 - b. The Queensland Health approach should include Hospital and Health Service based sustainability roles, resourced to reflect the need for a whole of system approach and support local innovation.
 - c. Planetary health and climate change response interventions, large and small (including actions to reduce waste), should be formally recognised and celebrated by the Department of Health and local Hospital and Health Services.

Awareness

- 9 Queensland Health should improve the awareness, literacy, capability and empowerment of staff and consumers in relation to planetary health and climate change.

Staff recruitment

- 10 Queensland Health should increase the ability to attract, recruit and retain staff through workplaces that embody and support sustainability.

Action Plan

- 11 Queensland Health should develop a Climate Action Plan that strengthens a coordinated approach to governance, coordination and outcomes, to drive immediate and longer-term action in relation to planetary health, climate change and healthcare.



- d. Planetary health and climate change response principles and indicators should be formally incorporated across all relevant system planning, policies, procedures and practices, including procurement.